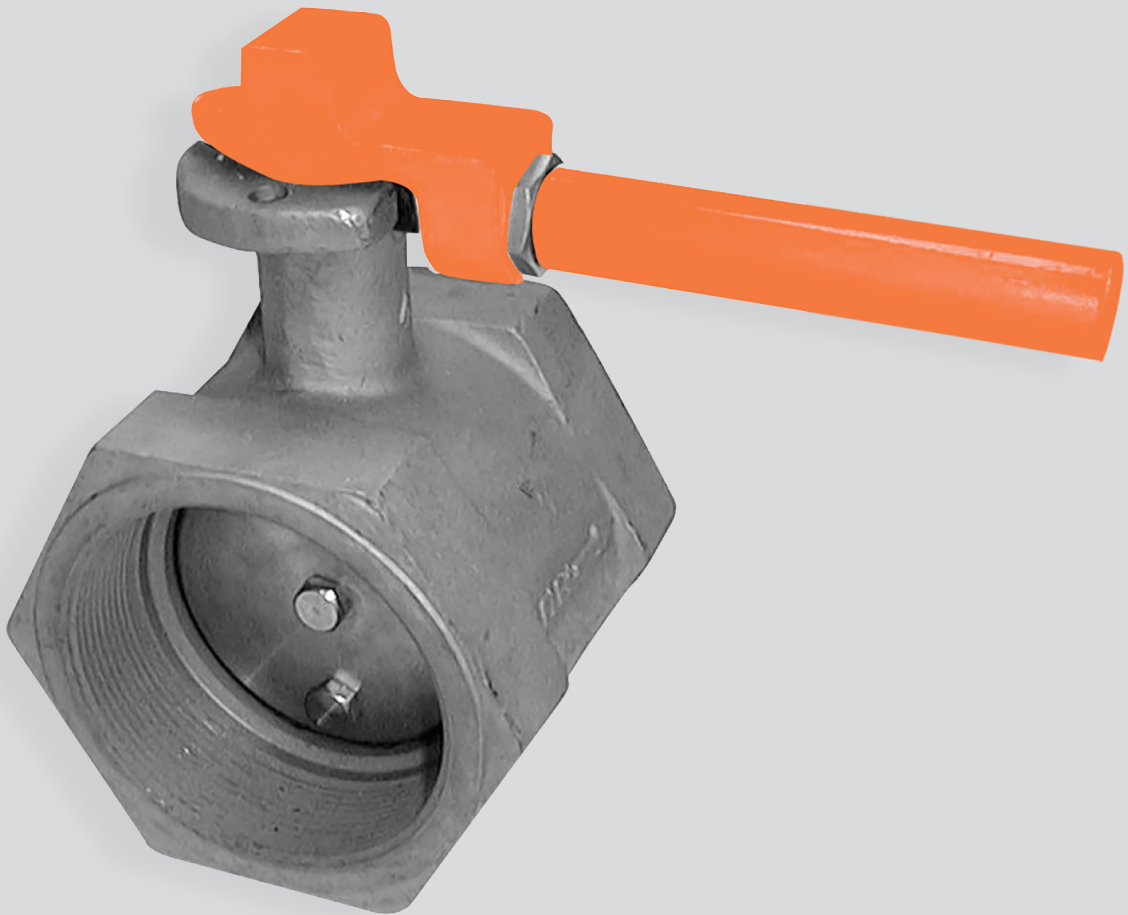


Building connections that last™



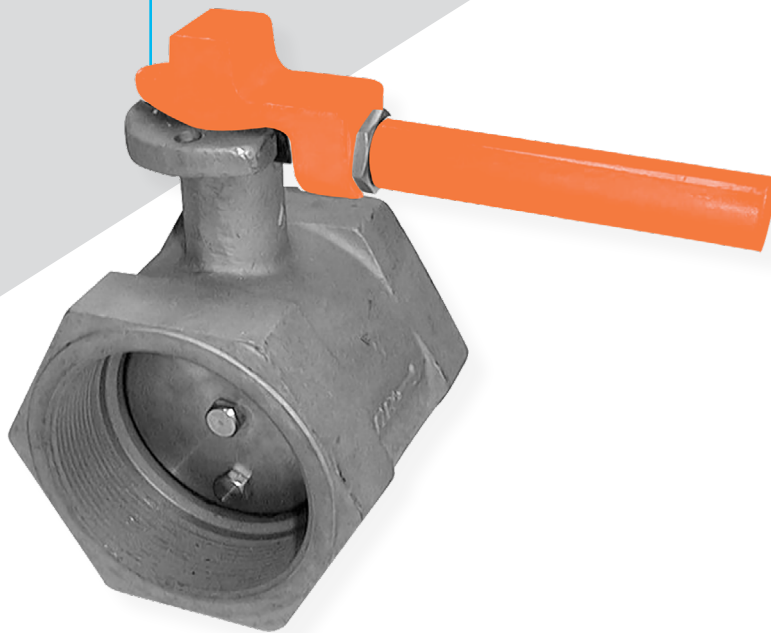
BFV-T

Thread End, Butterfly Valve Datasheet



Thread End, Butterfly Valves

BFV-T



Features

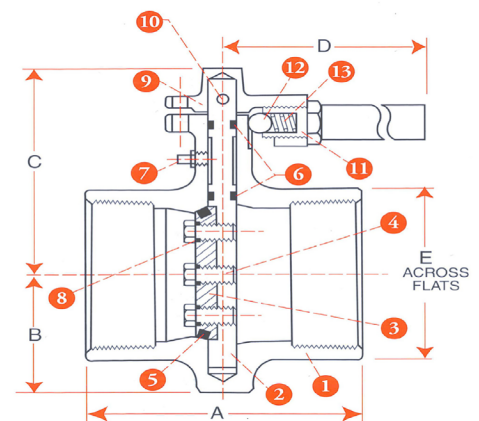
- Electroless Nickel Plated Cast Iron Body
- Standard Aluminum Bronze Disc
- Standard 416 Stainless Stem
- Standard 304 Stainless Internal Fasteners
- Grease Fitting in Stem Provides Stem Lubrication Capability
- Two Position Detented Handle with Locking Capability in Open and Closed Positions
- O-Ring Disc Seal for Positive Shut-off
- Ideal for Mud Service and Tank Farms

Ratings

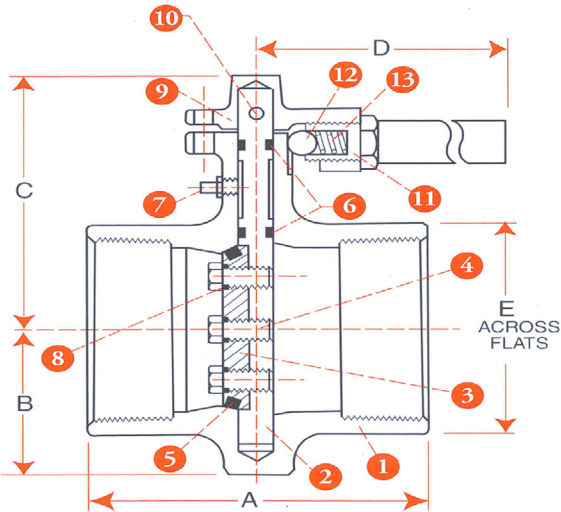
200 PSIG @ 120°F (Buna-N-Seals)

Materials of Construction

Part	Description	Standard Material	Optional Material
1	Body	Cast Iron, ENP Plated	
2	Stem	416 Stainless Steel	
3	Disc	ASTM B148 C95400 Alum Bronze	
4	Disc Bolts	304 Stainless Steel	
5	Disc O-Ring	Buna-N	Viton A
6	Stem O-Rings (2)	Buna-N	Viton A
7	Grease Fitting	Plated Steel	
8	Disc Bolt Seals	Buna-N	Viton A
9	Handle	Ductile Iron	
10	Handle Pin	Plated Steel	
11	Handle Stop Assy	Plated and Painted Seal	
12	Handle Stop Ball	Steel	
13	Handle Ball Spring	Stainless Steel	



Thread End, Butterfly Valves
BFV-T



Dimensions, Weights, Cv Factors & Maximum Operating Torque

Size	A	B	C	D	E	Weight Lbs.	CV	Max Torque (IN-LBS)
2"	4 - 1/4	2 - 1/4	4 - 3/4	8	3	10.8	125	100
3"	4 - 7/8	2 - 3/4	6 - 1/8	8	4 - 1/8	15.8	300	220
4"	5 - 1/8	3 - 3/4	6 - 3/8	8	5 - 3/8	22.5	525	320

Repair Kits Available

Size	Repair Kit Number	ASC 10-Digit	Parts Included
2"	RK - BFV - T200	6322015840	#6 (x2), #8 (x2), #5, #3
3"	RK - BFV - T300	6322015880	#6 (x2), #8 (x2), #5, #3
4"	RK - BFV - T400	6322015920	#6 (x2), #8 (x2), #5, #3

Thread End, Butterfly Valves

BFV-T



Numbering System How to order BFV-T

BFV	T	J	B	4	B	I	LH	300
Series	Body Style	Body Material	Disc Material	Stem Material	Seat/Seal Material	Body Plating/Coating	Handle Type	Size
BFV	T FNPT Threaded	J Cast Iron	B Alum Bronze	4 416SS	B Buna-N	I ENP	LH Lever	200 2"
					F Viton-A			300 3"
								400 4"

Note:

Responsibility for proper selection, use and maintenance of any product remains solely with the purchaser and end user. We reserve the right to modify or improve the designs or specifications of any product at any time without notice.

About ASC Engineered Solutions

ASC Engineered Solutions is defined by quality—in its products, services and support. With more than 1,400 employees, the company's portfolio of precision-engineered piping support, valves and connections provides products to more than 4,000 customers across industries, such as mechanical, industrial, fire protection, oil and gas, and commercial and residential construction. Its portfolio of leading brands includes ABZ Valve®, AFCON®, Anvil®, Anvil EPS, Anvil Services, Basic-PSA, Beck®, Catawissa, Cooplet®, FlexHead®, FPPI®, Gruvlok®, J.B. Smith, Merit®, North Alabama Pipe, Quadrant®, SCI®, Sharpe®, SlideLOK®, SPF® and SprinkFLEX®. With headquarters in Commerce, CA, and Exeter, NH, ASC also has ISO 9001:2015 certified production facilities in PA, TN, IL, TX, AL, LA, KS, and RI.



asc-es.com

Building connections that last™

FC-DS-BFV-T-v02 20220907

